

PLAT NO. IV-A-LE CHALET (P.U.D.)

IN SECTION 14, TOWNSHIP 45 SOUTH, RANGE 42 EAST

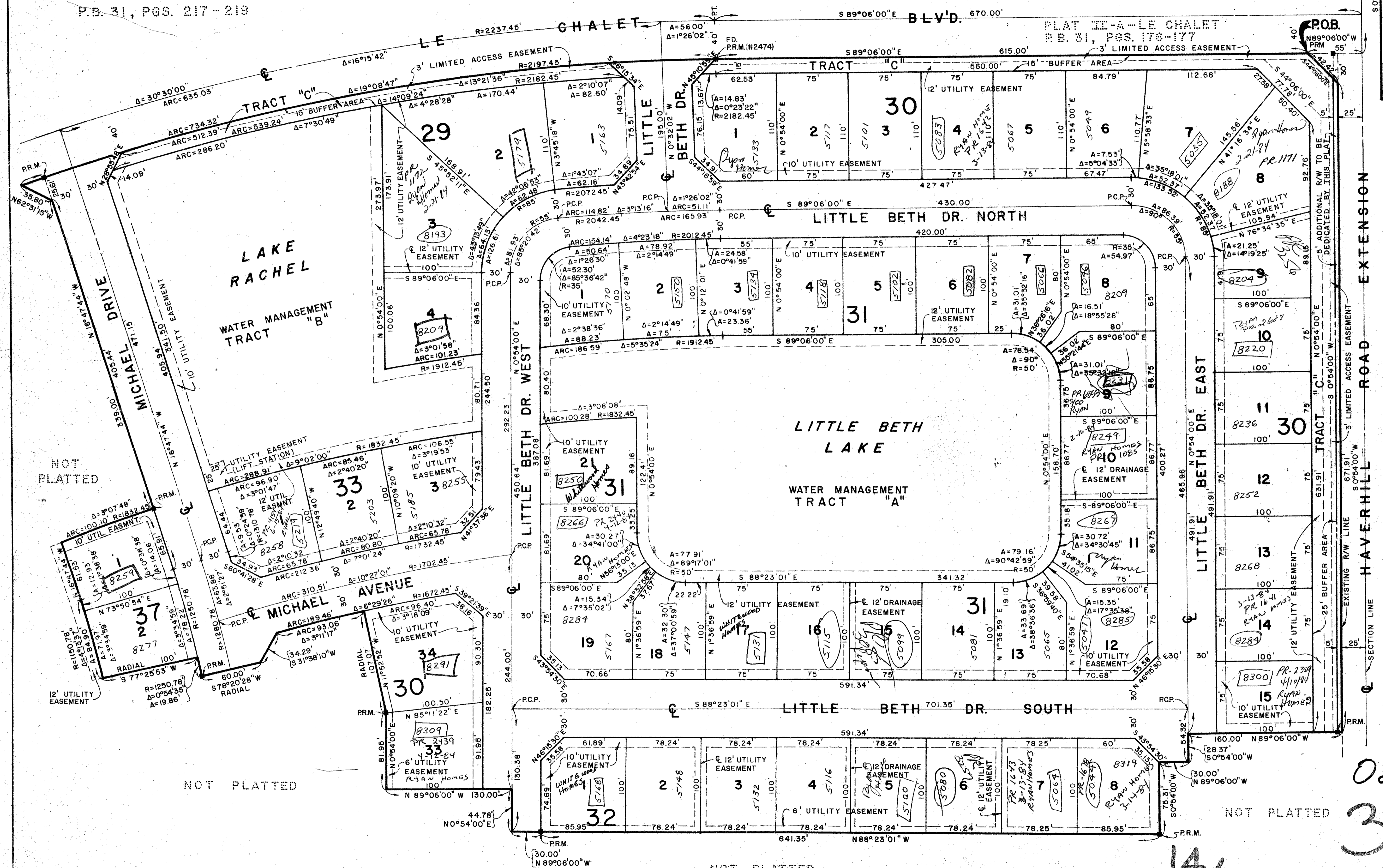
PALM BEACH COUNTY, FLORIDA

IN 2 SHEETS SHEET NO. 2

23

PLAT II-B-LE CHALET
P.B. 31, PGS. 217-218

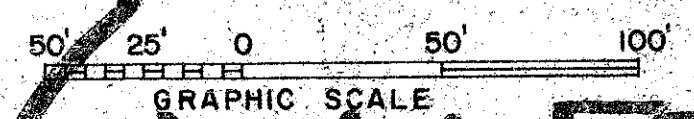
STATE OF FLORIDA }
COUNTY OF PALM BEACH }
This Plat was filed for record at }
this } day of }
19 } and duly recorded in Plat Book No. }
on page }
JOHN B. DUNN, Clerk of Court }



0270-308
34-23

IV-A-LE CHALET

This Instrument Was Prepared by
R. Shephard in the Office of
Rossi and Malavasi Engineers, Inc.



ROSSI AND MALAVASI ENGINEERS, INC.		PLAT NO. IV-A LE CHALET (P.U.D.) IN 2 SHEETS SHEET NO. 2	
Date	APRIL, 1976	Designed	R. SHEPHARD
Drawn	R. ANDERSON	Scale	1" = 50'
Checked		Job No.	4225-75
Approved		File No.	S. 1085-000
			Sheet 2 of 2